

Weekly Report

2016 Week 1 (January 03 – January 09, 2016) through 2017 Week 1 (January 01 – January 07)

Department of Health and Human Services
Division of Public and Behavioral Health
Office of Public Health Informatics and Epidemiology



Brian Sandoval
Governor
State of Nevada

Richard Whitley, MS
Director
Department of Health and Human Services

Cody L. Phinney, MPH
Administrator
Division of Public and Behavioral Health

John DiMuro, DO, MBA
Chief Medical Officer
Division of Public and Behavioral Health

*February 2017
Edition 1.0*

Data for the graphs and tables on the following pages are provisional and may be updated as additional information becomes available.

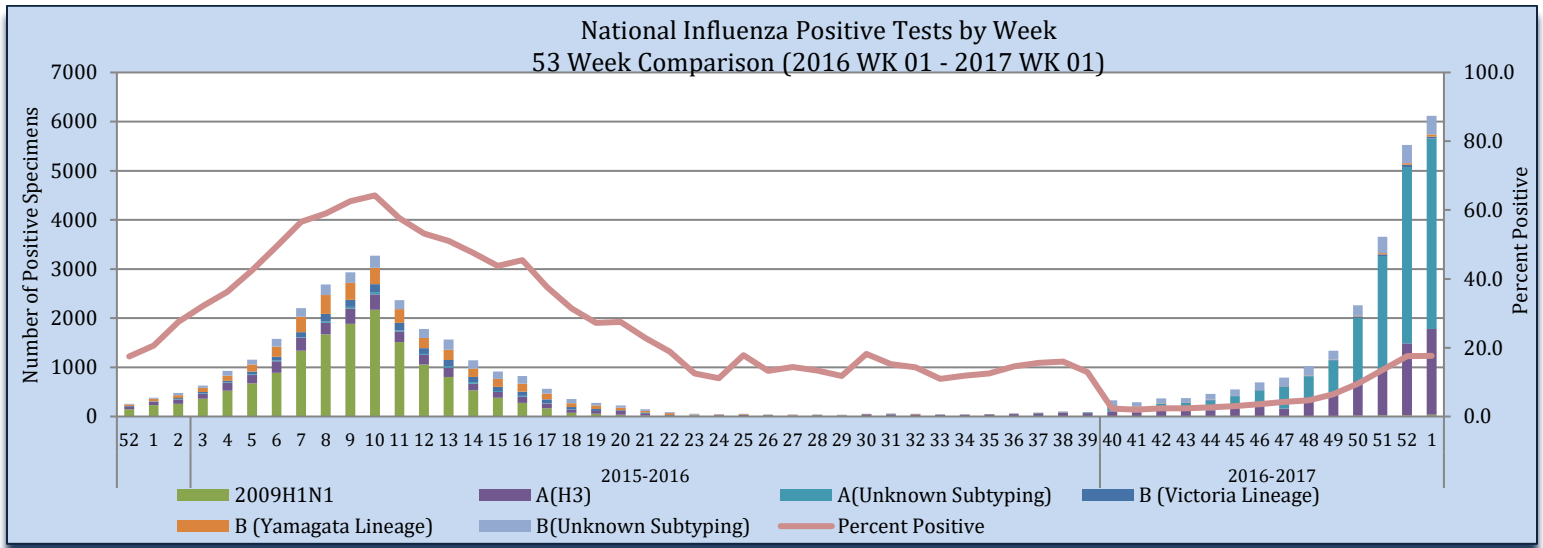
Purpose

The purpose of this report is to provide an overview of and statistics for the influenza season in Nevada for the local public health authorities, sentinel providers and the public.

Sentinel Provider Data: Influenza-Like Illness Network Surveillance (ILINet)

Respiratory specimens are tested for influenza by the World Health Organization (WHO) and National Respiratory and Enteric Virus Surveillance System (NRVESS) collaborating laboratories by sub-type. During week 01, there were 34,611 specimens collected and tested for influenza, of those 6,115 were positive (17.7%).

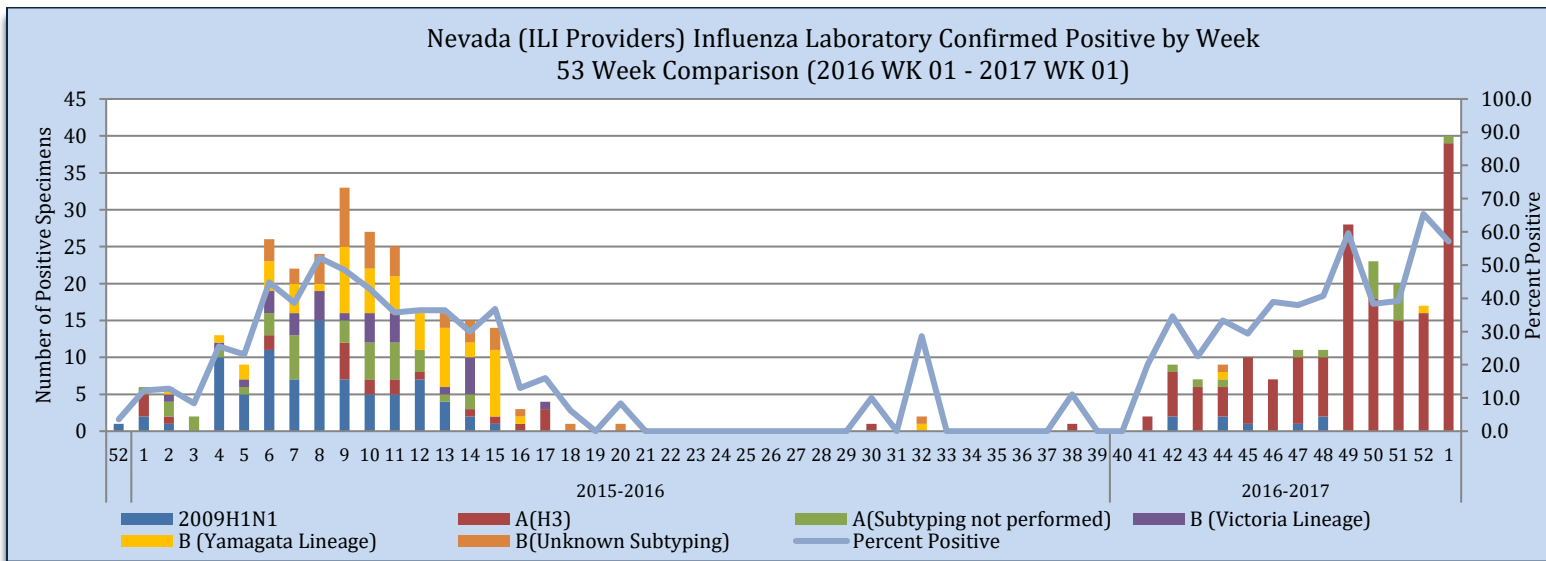
Figure 1



Source of Data: CDC: FluView Weekly Report.

The Nevada total includes laboratory tests for all Nevada residents tested by sentinel providers including out of state laboratories. During week 01, there were 70 specimens collected and 40 were positive (57.1%). There is a two week delay for laboratory surveillance.

Figure 2



Source of Data: CDC: ILINet.

Nevada State Public Health Laboratory (NSPHL) has tested 201 specimens for influenza from sentinel providers, of which there have been 170 positive (84.6%). Southern Nevada Public Health Laboratory (SNPHL) has tested 38 specimens this season of which there have been 2 positives. Nationally, there have been 292,991 specimens sent to the WHO and NERVSS laboratories of which 23,787 have been positive (8.01%). The national numbers in Table 1 are reflected in Figure 1. The state of Nevada data in Table 1 is reflected in Figure 2. The Nevada total includes laboratory test for all Nevada residents tested by sentinel providers, including out of state laboratories.

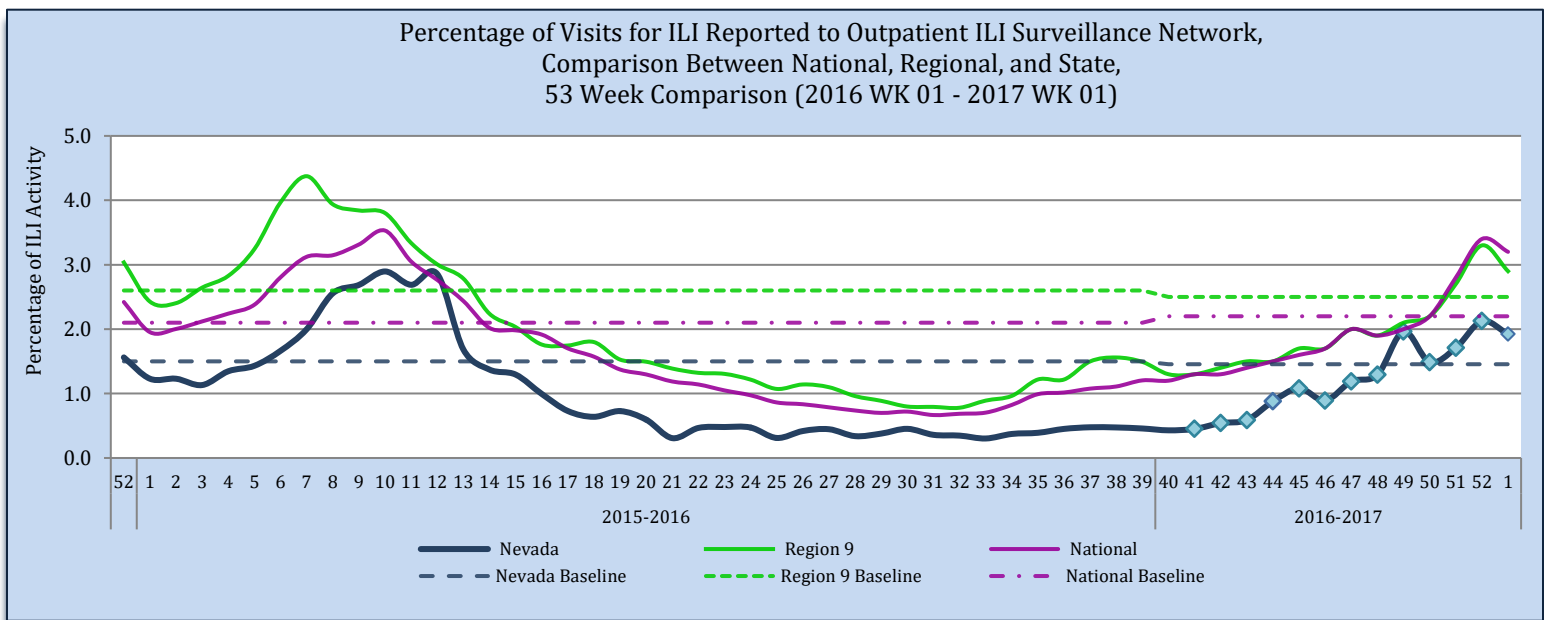
Table 1

	Influenza Specimens Tested State and Nationally through Sentinel Providers										
	NSPHL	SNPHL	All Other Laboratories	State of Nevada (Week 01)		State of Nevada (Season)		National (Week 01)		National (Season)	
				#	%	#	%	#	%	#	%
Specimens Tested	201	38	225	70		464		34,611		292,991	
Influenza Positives	170	2	22	40	57.1	194	41.8	6,115	17.7	23,787	8.01
Influenza A:	169	2	20	40	100	191	98.5	5,658	92.5	20,793	87.4
A (2009 H1N1)	7	0	1	0	0.0	8	4.2	39	0.7	240	1.0
A (H3)	162	2	3	39	97.5	167	87.4	1,743	30.8	6,642	31.9
A (Sub-typing not performed)	0	0	16	1	2.5	16	8.4	3,879	68.5	13,947	67.1
Influenza B:	1	0	2	0	0.0	3	1.5	457	7.5	2,994	12.6
B (Victoria Lineage)	0	0	0	0	0.0	0	0.0	37	8.1	216	7.3
B (Yamagata Lineage)	1	0	1	0	0.0	2	66.7	47	10.3	166	5.5
B (Sub-typing not performed)	0	0	1	0	0.0	1	33.3	373	81.6	2,609	87.1

Source of Data: CDC: FluView Report and CDC: ILINet.

Influenza-like Illness (ILI) Surveillance Network has each sentinel provider report the number of patients seen that meet the ILI case definition and the total number of patients seen for any reason each week. The “percentage of visits for ILI” is the number of ILI patients divided by the total number of patients visit per week. Nevada’s percentage of ILI visits for week 01 is 1.9% which is above the state baseline of 1.5%. Region 9 ILI percentage for week 01 is 2.9% which is above the region baseline 2.5%. Region 9 includes the following states/territory: Arizona, California, Guam, Hawaii, and Nevada. The national ILI percentage for week 01 is 3.2% which is above the national baseline 2.5%.

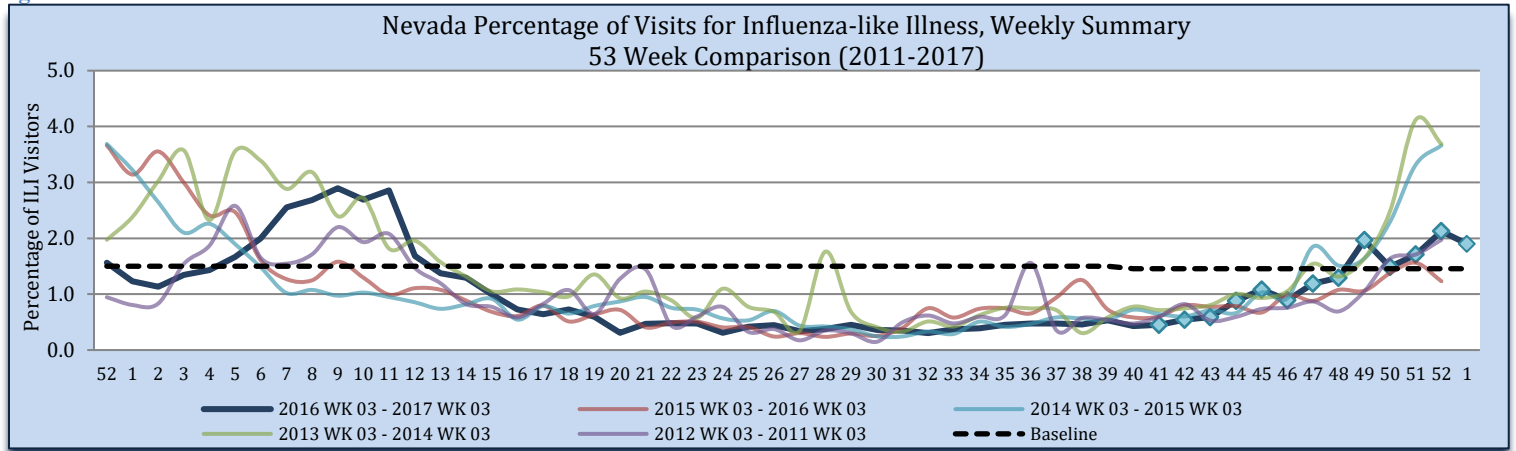
Figure 3



Source of Data: CDC: Flu View Report and CDC: ILINet.

During week 01, 1.9% of visits to sentinel providers were due to ILI; this is higher than the 2015-2016 influenza season (1.3%). There were 17,527 patients seen by sentinel providers during week 01, of which 337 patients presented with ILI; week 01 of 2016, there were 230 patients seen with ILI (18,691 total patients seen).

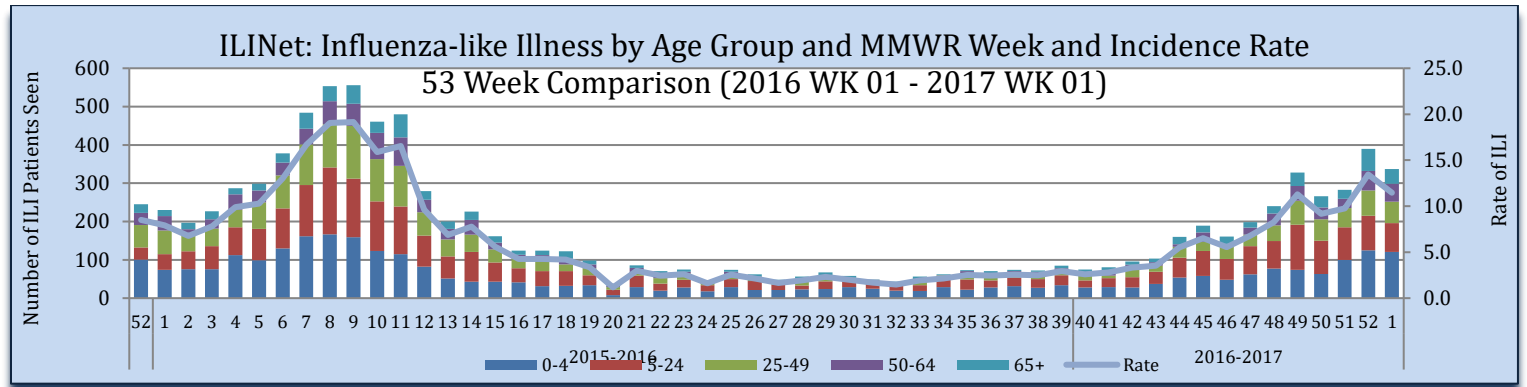
Figure 4



Source of Data: CDC: ILINet.

Influenza-like Illness is reported by age groups. During week 01, patients age 0-4 were the greatest number of patients seen with ILI, at 121 patients seen. The rate for week 01 is 11.5 per 100,000 population. The rate is calculated by the number of patients presented with ILI, divided by the state population, multiplied by 100,000. The estimated state population for 2017 is 2,935,490.

Figure 5



Source of Data: CDC: ILINet.

Influenza Positive Surveillance (NBS and NETSS)

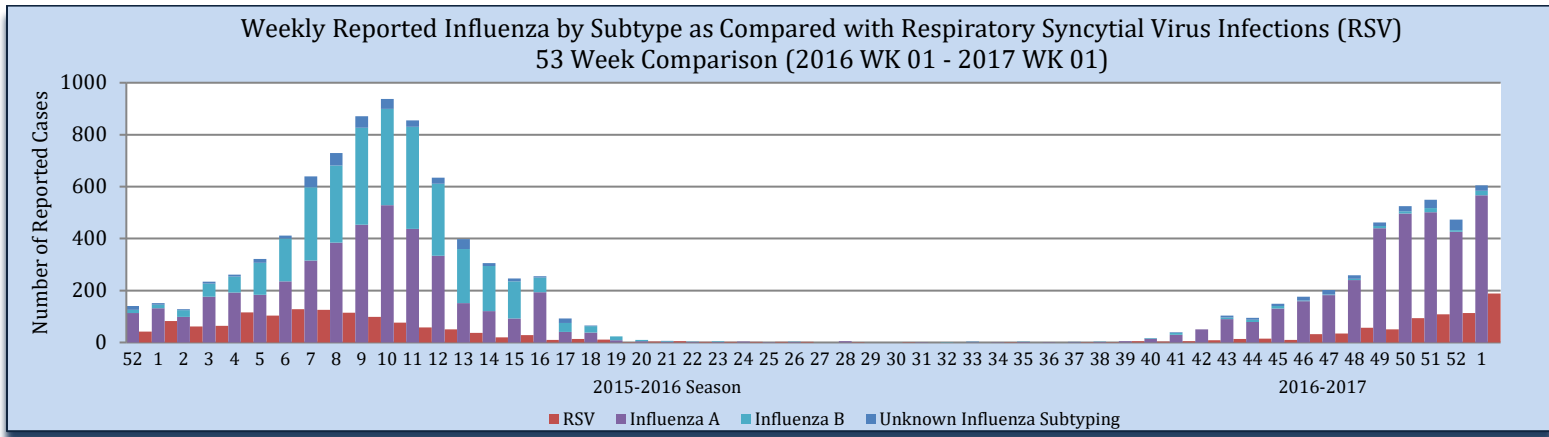
Positive cases of influenza are reported to the state health authority for surveillance purposes. Table 2 and Figure 6 reflect all positive influenza cases reported to the state. Types of influenza testing include commercial rapid diagnostic test (rapid), viral culture, fluorescent antibody, enzyme immunoassay, RT-PCR (PCR), and Immunohistochemistry. The two most common test types in Nevada are Rapid and PCR tests. During week 01, there were 605 influenza cases reported to the state, 567 influenza A, 17 influenza B and 21 unknown subtyping.

Table 2

Reporting Jurisdiction	Reported Influenza Cases by County Jurisdiction and Influenza Type							
	Current Week (Week 02)				Cumulative Influenza Season			
	A	B	Unknown	Total	A	B	Unknown	Total
Carson City Health and Human Services	112	0	0	112	585	0	2	587
Rural Community Health Services	33	0	1	34	302	12	13	327
Southern Nevada Health District	248	12	4	264	1,013	60	73	1,146
Washoe County Health District	174	5	16	195	1,506	30	108	1,644
State of Nevada	567	17	21	605	3,406	102	196	3,704

Source: OPHIE: NBS and SNHD: NETSS.

Figure 6



Source of Data: OPHIE: NBS and SNHD: NETSS.

Hospitalizations

There were 53 hospitalization associated with influenza reported to the state health authority for week 01.

Table 3

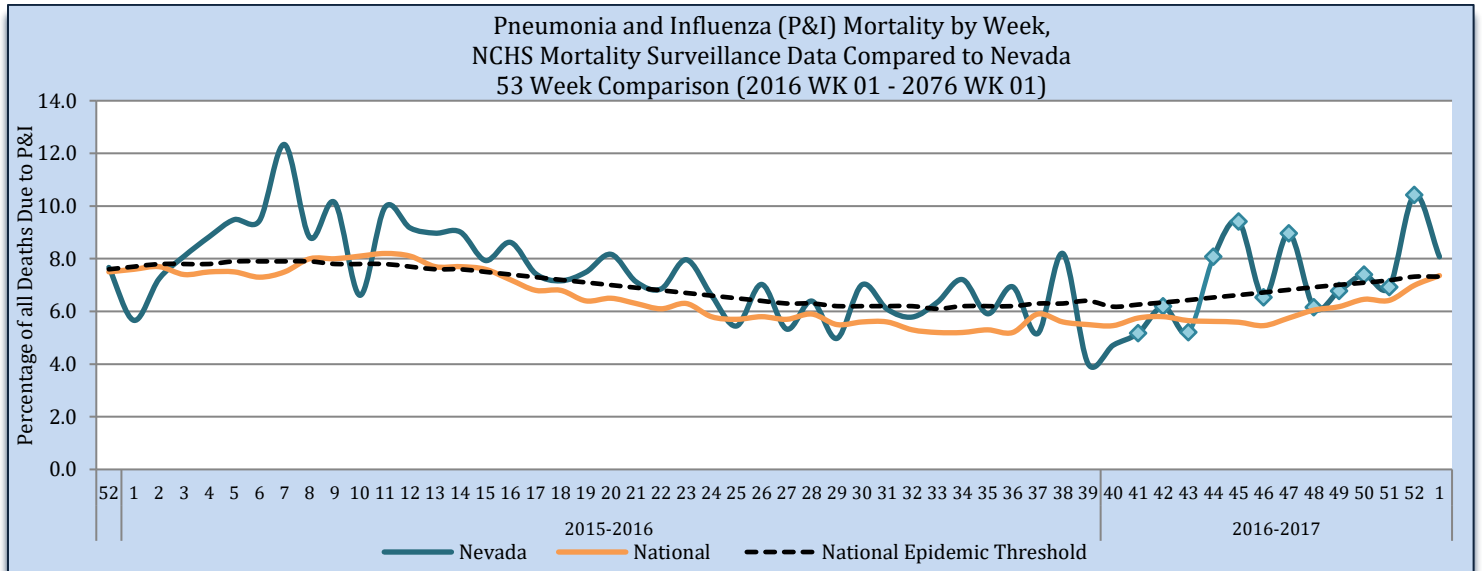
Reporting Jurisdiction	Influenza Hospitalizations		Cumulative Influenza Season	
	Current Week (Week 01)		#	%
Carson City Health and Human Services	13	24.5	18	5.7
Rural Community Health Services	0	0.0	4	1.3
Southern Nevada Health District	5	9.4	86	27.1
Washoe County Health District	35	66	209	65.9
State of Nevada	53	100	317	100

Source: Reported to Office of Public Health Informatics and Epidemiology from each Jurisdiction.

Pneumonia and Influenza (P&I) Mortality Surveillance

The Pneumonia and Influenza (P&I) mortality percentage is all deaths, where Pneumonia or Influenza is listed as the underlying or contributing cause of death, divided by the total deaths in Nevada for each week. As of January 30th, there were 39 P&I deaths and 483 total deaths for week 01 in Nevada. Nationally, the P&I mortality percent is 8.1%.

Figure 7



Source: OVR: WEVRRS and CDC: FluView.

Technical Notes

- Data are subject to changes, additionally, there is a lag in reporting.
- Influenza surveillance procedures vary by jurisdiction.
- Influenza-like illness (ILI): a fever greater than or equal 100°F with cough and/or sore throat.
- Percent positive: The number of positive influenza laboratory tests divided by the total number of tests performed.
- Incidence rate is per 100,000 population as estimated by the state demographer.

This report contains information from national and state-level data sources. Influenza surveillance data is collected by a various systems, including:

- Influenza-like Illness Network (ILINet): a sentinel surveillance system in collaboration with the Centers for the Disease Control and Prevention (CDC) where outpatient providers report ILI information weekly.
- National Electronic Telecommunication System for Surveillance (NETSS): a system whereby data is transmits to CDC. Influenza data collected through NETSS does not provide influenza sub-typing information.
- National Electronic Disease Surveillance System (NEDSS): a system for collecting data and monitoring disease trends and outbreaks.
- NEDSS Based System (NBS): an implementation of the NEDSS standards. It provides a secure, accurate, and efficient means of collecting, transmitting, and analyzing public health data.

Citations

1. CDC. FluView: A Weekly Influenza Surveillance Report. <http://www.cdc.gov/flu/weekly/pastreports.htm>.
2. Nevada State Demographer's Office. 2003-2020 ASRHO Estimates and Projections. Division of Public and Behavioral Health edition. Vintage 2015.
3. OPHIE. DPBH. NBS. 2015-2017. Accessed January 2017.
4. Office of Vital Records (OVR). DPBH. Web Enabled Vital Records Registry System (WEVRRS) [unpublished data]. 2015-2017. Accessed January 2017.
5. Southern Nevada Health District (SNHD). NETSS/Trisano. 2015-2017. Accessed January 2017.

Comments, suggestions, and requests for further information may be addressed to:

**NEVADA INFLUENZA SURVEILLANCE PROGRAM
OFFICE OF PUBLIC HEALTH INFORMATICS AND EPIDEMIOLOGY
500 DAMONTE RANCH PKWY, STE 657
RENO, NV 89521
TEL: (775) 684-5289
FAX: (775) 684-5999**

Compiled and Written by:

Liliana E. Wilbert, MPH

Reviewed by:

Jennifer Thompson
Melissa Peek-Bullock

Recommended Citation:

Division of Public and Behavioral Health. Office of Public Health Informatics and Epidemiology. Influenza Weekly Report, 2016 Week 01 (January 03, 2016) through 2017 Week 01 (January 07), Nevada. February 2017 i 01 edition 1.0.

This publication was supported by Cooperative Agreement Number TP000534-02 from the Centers for Disease Control and Prevention and/or Assistant Secretary for Preparedness and Response. Its contents are solely the responsibility of the authors and do not necessarily represent the official views of the Centers for Disease Control and Prevention and/or Assistant Secretary for Preparedness and Response.

